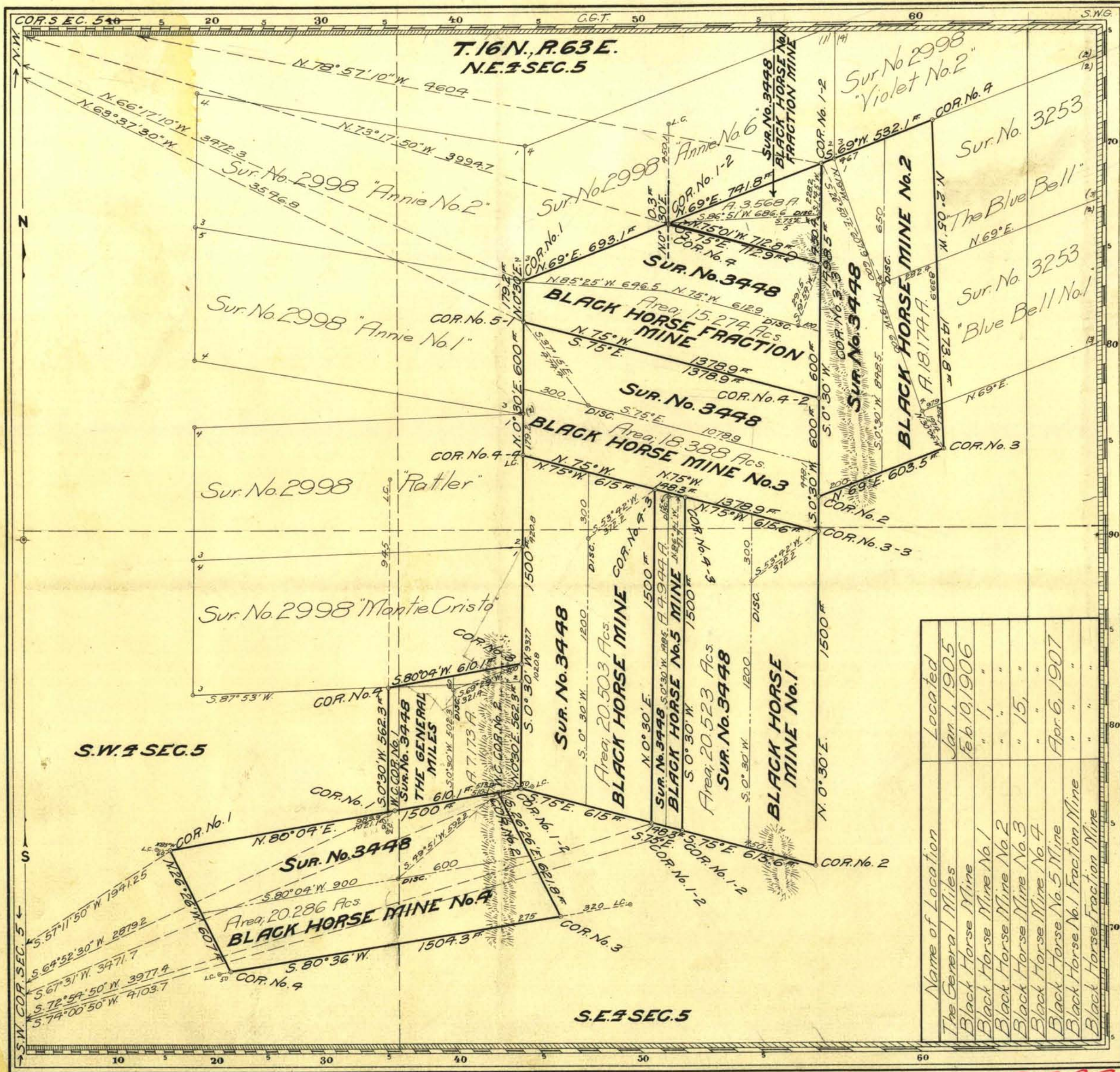


Watch improvements on sur no. 2798  
3253 Serial 06638  
3982 Patent # 327990  
Apr. 23, 1913



H.S.P. Claim Located FEB. 190

Mineral Survey No. **3448**

Carson City Land District.

**PLAT**  
OF THE CLAIM OF  
*The Ely Resurrection Copper Company*

KNOWN AS THE  
THE GENERAL MILES, BLACK HORSE MINE, BLACK HORSE MINE No. 1, BLACK HORSE MINE No. 2, BLACK HORSE MINE No. 3, BLACK HORSE MINE No. 4, BLACK HORSE No. 5 MINE, BLACK HORSE No. 1 FRACTION MINE, BLACK HORSE FRACTION MINE IN Robinson (MINE LODES), MINING DISTRICT, White Pine COUNTY, Nevada  
Containing an Area of 128.833 Acres.  
Scale of 400 Feet to the inch.  
Variation 17° 30' E.

SURVEYED Feb 24 - Mar 5, 1908 BY  
*Jas. W. Wade* U.S. Deputy Mineral Surveyor,

The Original Field Notes of the Survey of the Mining Claim of *The Ely Resurrection Copper Company* known as the *The General Miles, Black Horse Mine, Black Horse Mine No. 1, Black Horse Mine No. 2, Black Horse Mine No. 3, Black Horse Mine No. 4, Black Horse Mine No. 5 Mine, Black Horse No. 1 Fraction Mine, Black Horse Fraction Mine* Lodes from which this plat has been made under my direction, have been examined and approved, and are on file in this office, and I hereby certify that they furnish such an accurate description of said Mining Claim as will, if incorporated into a patent, serve fully to identify the premises, and that such reference is made therein to natural objects or permanent monuments as will perpetuate and fix the locus thereof.

I further certify that Five Hundred Dollars worth of labor has been expended or improvements made upon said Mining Claim by claimant or grantors, and that said improvements consist of

Name of Location	Located
The General Miles	Jan. 1, 1905
Black Horse Mine	Feb. 10, 1906
Black Horse Mine No. 1	" "
Black Horse Mine No. 2	" "
Black Horse Mine No. 3	" 15, "
Black Horse Mine No. 4	" "
Black Horse No. 5 Mine	Apr. 6, 1907
Black Horse No. 1 Fraction Mine	" "
Black Horse Fraction Mine	" "

that the location of said improvements is correctly shown upon this plat, and that no portion of said labor or improvements has been included in the estimate of expenditures upon any other claim.

And I further certify that this is a correct plat of said Mining Claim made in conformity with said original field notes of the survey thereof, and the same is hereby approved.

U.S. Surveyor General's Office.  
Preno, Nevada  
Sept. 12, 1908

*Marshall Kyle*  
U.S. Surveyor General for Nevada

3448